



GREENLAND

MINERALS AND ENERGY LTD

“Specialty Metals for a Greener World”

Important Notice

This presentation contains only a brief overview of Greenland Minerals and Energy Ltd (Greenland Minerals) and its respective activities and operations. The contents of this presentation may rely on various assumptions and subjective interpretations which are not possible to detail in this presentation and which have not been subject to any independent verification.

This presentation contains a number of forward looking statements. Known and unknown risks and uncertainties, as well as factors outside of Greenland Minerals' control, may cause the actual results, performance and achievements of Greenland Minerals to differ materially from those expressed or implied in this presentation.

To the maximum extent permitted by law, Greenland Minerals and its officers, employees and advisers are not liable for any loss or damage (including, without limitation, any direct, indirect or consequential loss or damage) suffered by any person directly or indirectly as a result of relying on this presentation or otherwise in connection with it.

The information contained in this presentation is not a substitute for detailed investigation or analysis of any particular issue and has been prepared without consideration of your objectives and needs and financial position. Current and potential investors and shareholders should seek independent advice before making any investment decision in regard to Greenland Minerals or its activities.

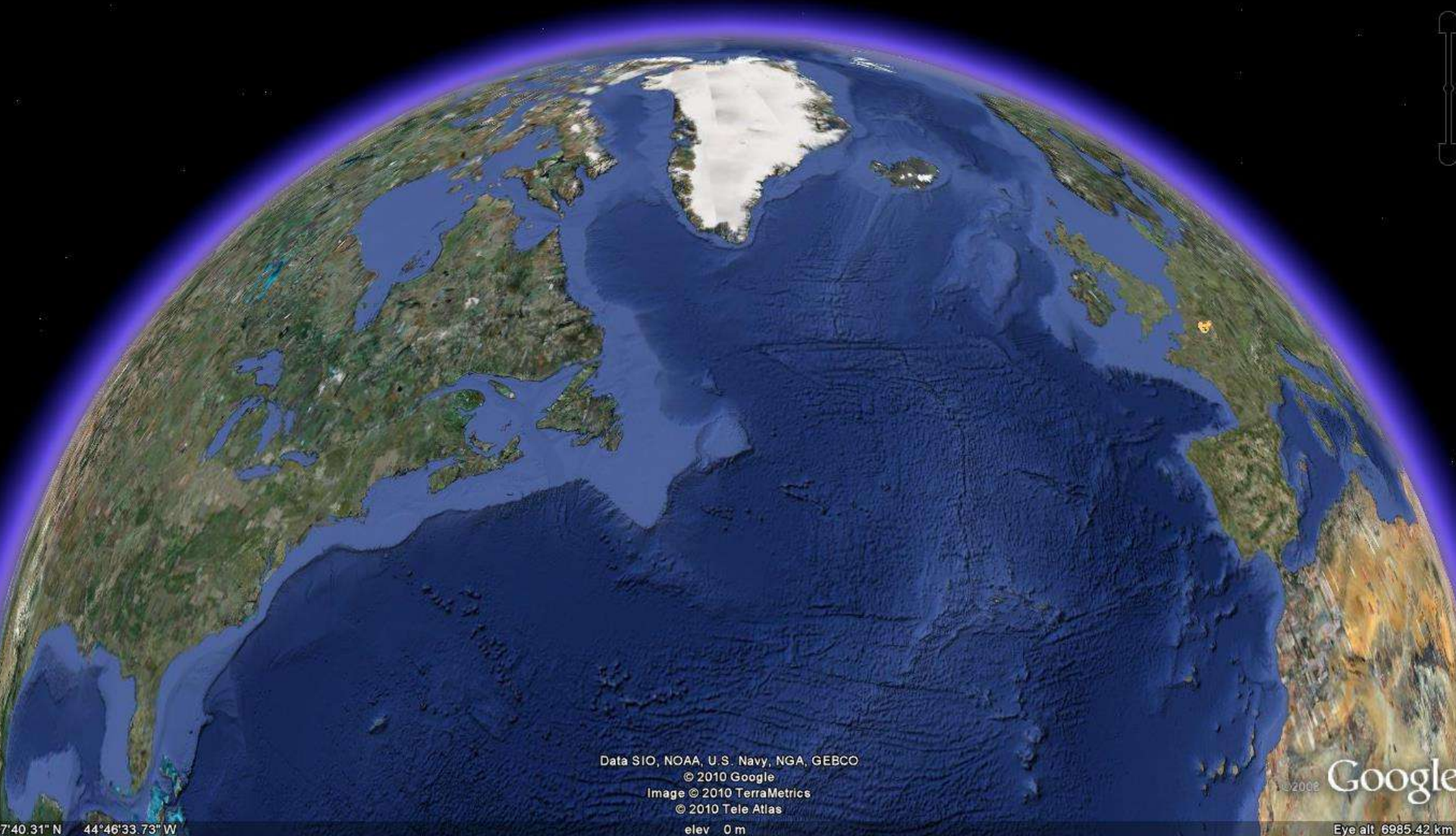
JORC Compliance – Consent of Competent Persons

Information in this presentation that relates to mineral resource estimation reflects information compiled by Mr Robert Spiers and Arnold van der Heyden. Resource estimation was undertaken by Mr Spiers who with Mr van der Heyden are full time employees of Hellman and Schofield Pty Ltd. Mr Spiers is a Member of the Australian Institute of Geoscientists (AIG) and Mr van der Heyden is a member of the Australian Institute of Mining and Metallurgy (AusIMM). Mr Spiers and Mr van der Heyden have sufficient experience which is relevant to the style of mineralisation and type of deposit under consideration and to the activity which they are undertaking to qualify as Competent Persons as defined in the 2004 Edition of the "Australasian Code for Reporting of Exploration Results, Mineral Resources and Ore Reserves". Mr Spiers and Mr van der Heyden consent to the reporting of this information in the form and context in which it appears.



Greenland

A geopolitically stable region now tapping its vast mineral and hydrocarbon wealth



GREENLAND
MINERALS AND ENERGY LTD



Greenland

An Emerging Mineral Province

Politically stable democracy:

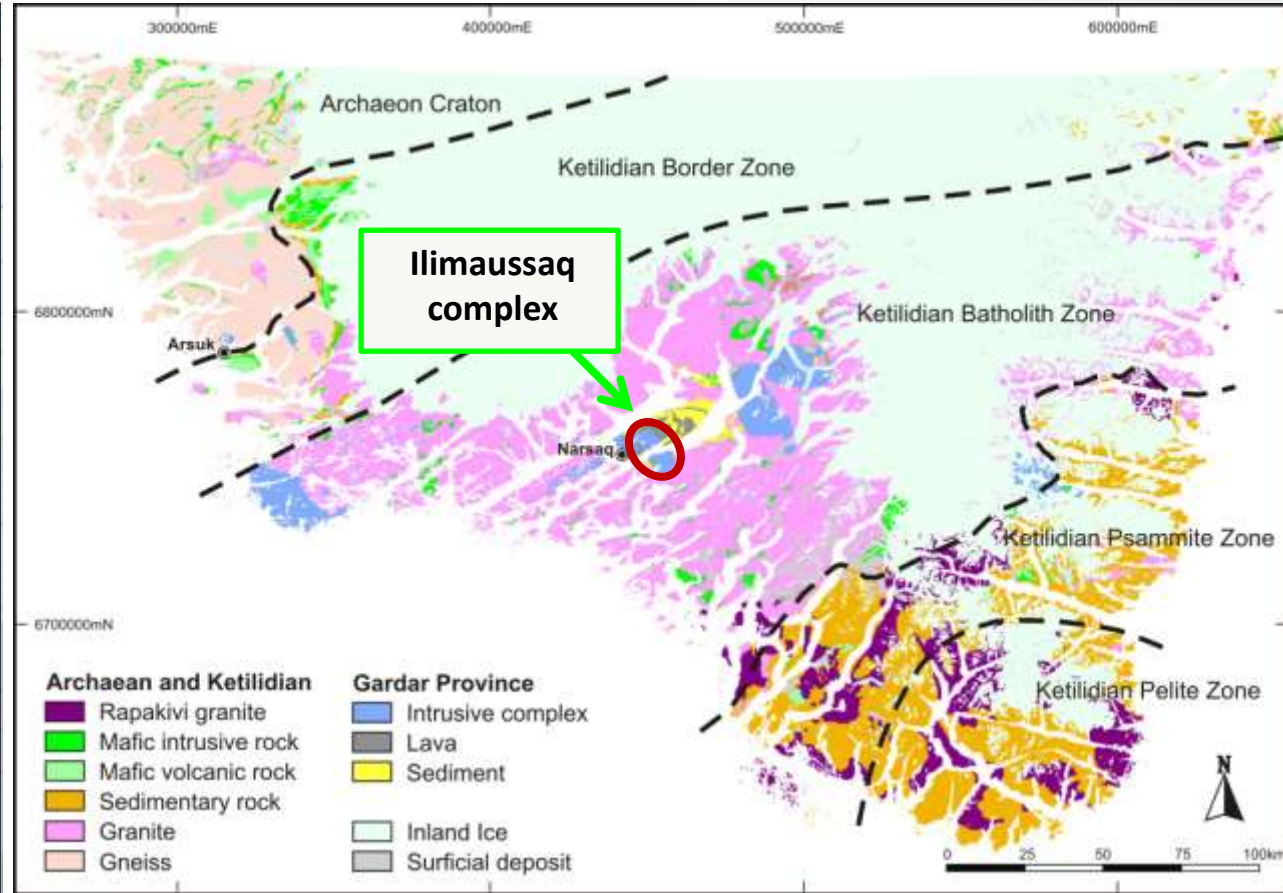
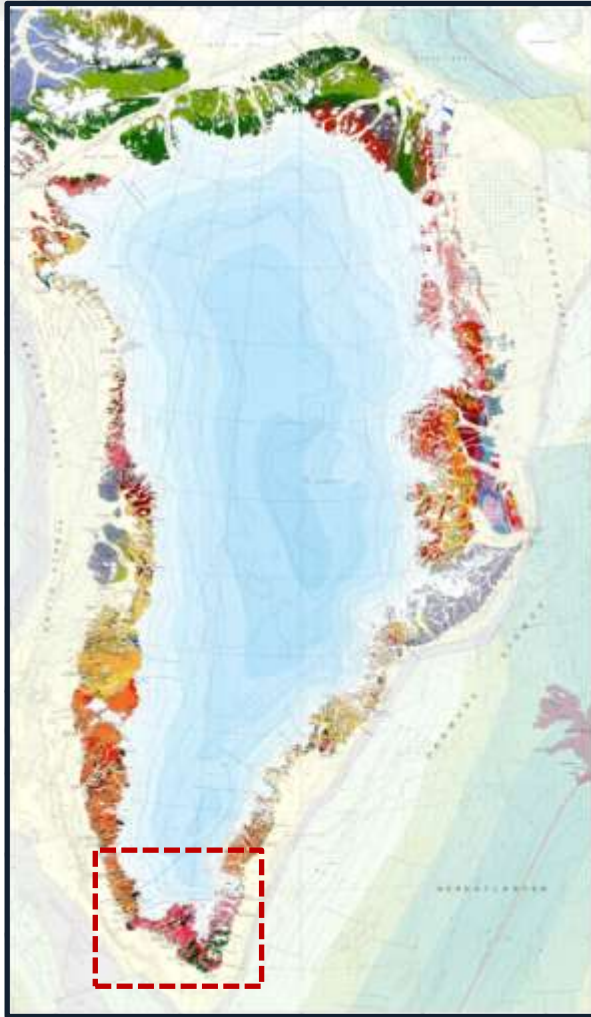
- *Autonomous constituent country within Kingdom of Denmark*
- *Increasing independence with transition from Home Rule to Self Rule*
- *Greenland controls 100% of mineral rights, formerly shared with Denmark*
- *Pro-mining government – increased independence is dependant on establishing strong minerals and hydrocarbon industries*
- *One of the last frontiers for world-class deposit discoveries*



GREENLAND
MINERALS AND ENERGY LTD



Greenland Geology



Gardar Province – Alkaline intrusions emplaced in a continental rift setting (*e.g. Ilimaussaq Complex*)



South Greenland Geography

Nasarsuaq
International
Airport

Ilmaussaq Complex

Narsaq

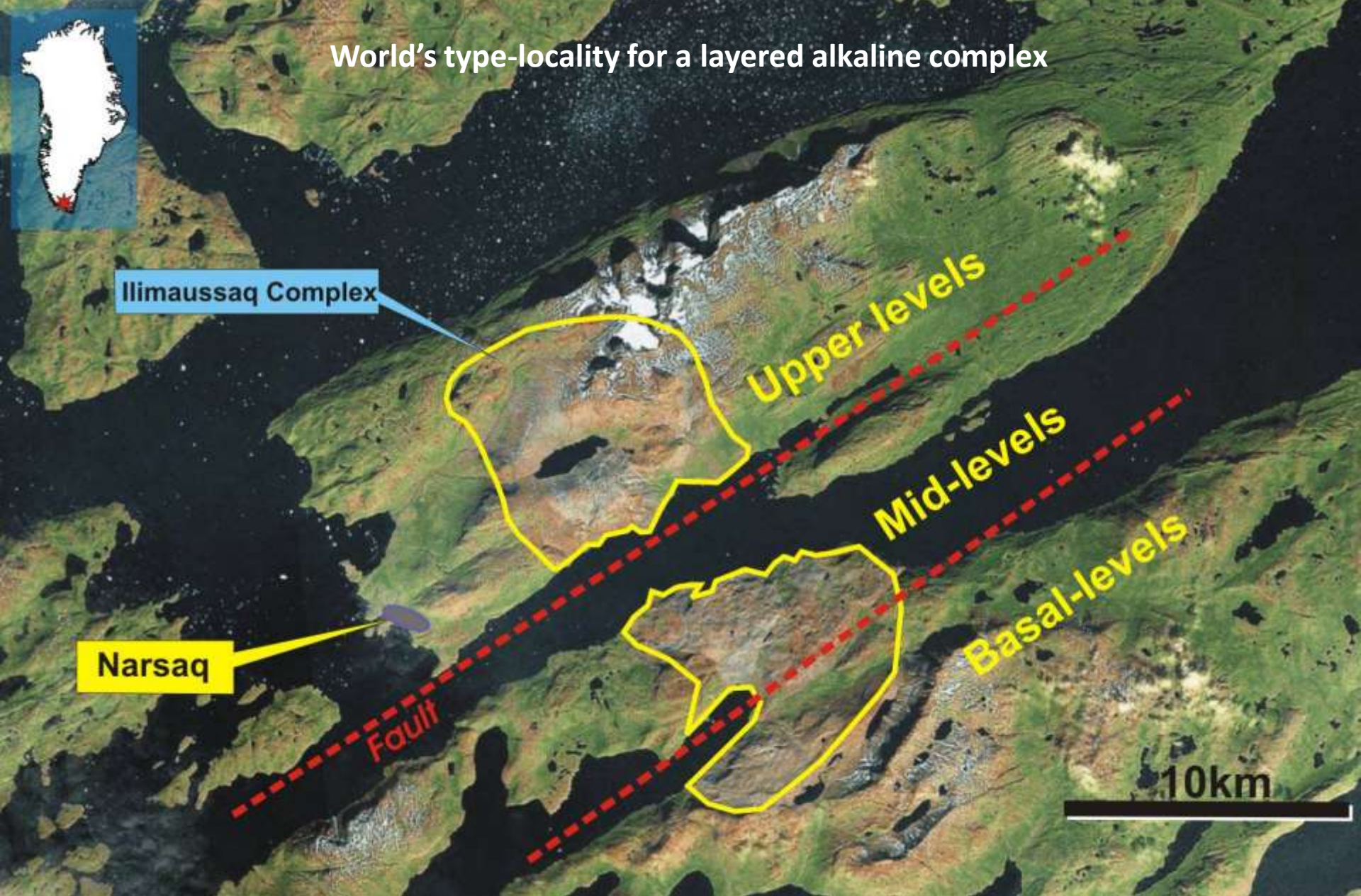
To North Atlantic

10km



GREENLAND
MINERALS AND ENERGY LTD







GREENLAND

MINERALS AND ENERGY LTD

- Greenland-focused exploration and development company listed on the Australian Securities Exchange (ASX)
- Primary aim: developing the **Kvanefield multi-element project (REEs, U, Zn)**
- Diverse collective of expertise across a broad range of disciplines:
 - *Former Director of LME, Former Prime Minister of Greenland, corporate financiers, world-class geoscientists, experienced project managers, top process team covering beneficiation and hydrometallurgy, proven exploration team skilled at operating in Greenland*
 - *Internationally respected consultancies*
- Listed on the **ASX (GGG)**, also trades on **US OTC (GDLNF)**, and **Frankfurt (G7P)**



Northern Ilimaussaq Complex – Project Area



457 Mt JORC resource defined at Kvanefjeld (**4.7 Mt REO, 283 Mlb's U_3O_8 , 1 Mt Zn**),

New satellite deposits confirmed at Zones 2 and 3, and Steenstrupfjeld



'Zone 2' – A New Multi-Element Discovery on the Northern Ilimaussaq



Black Iujavrite

Black Iujavrite outcrops extensively in the slopes that run to Tungdliarfik Fjord. The slope is approximately 700m from the ridge crest to sea level.



Kvanefjeld Plateau – Mineral Resources



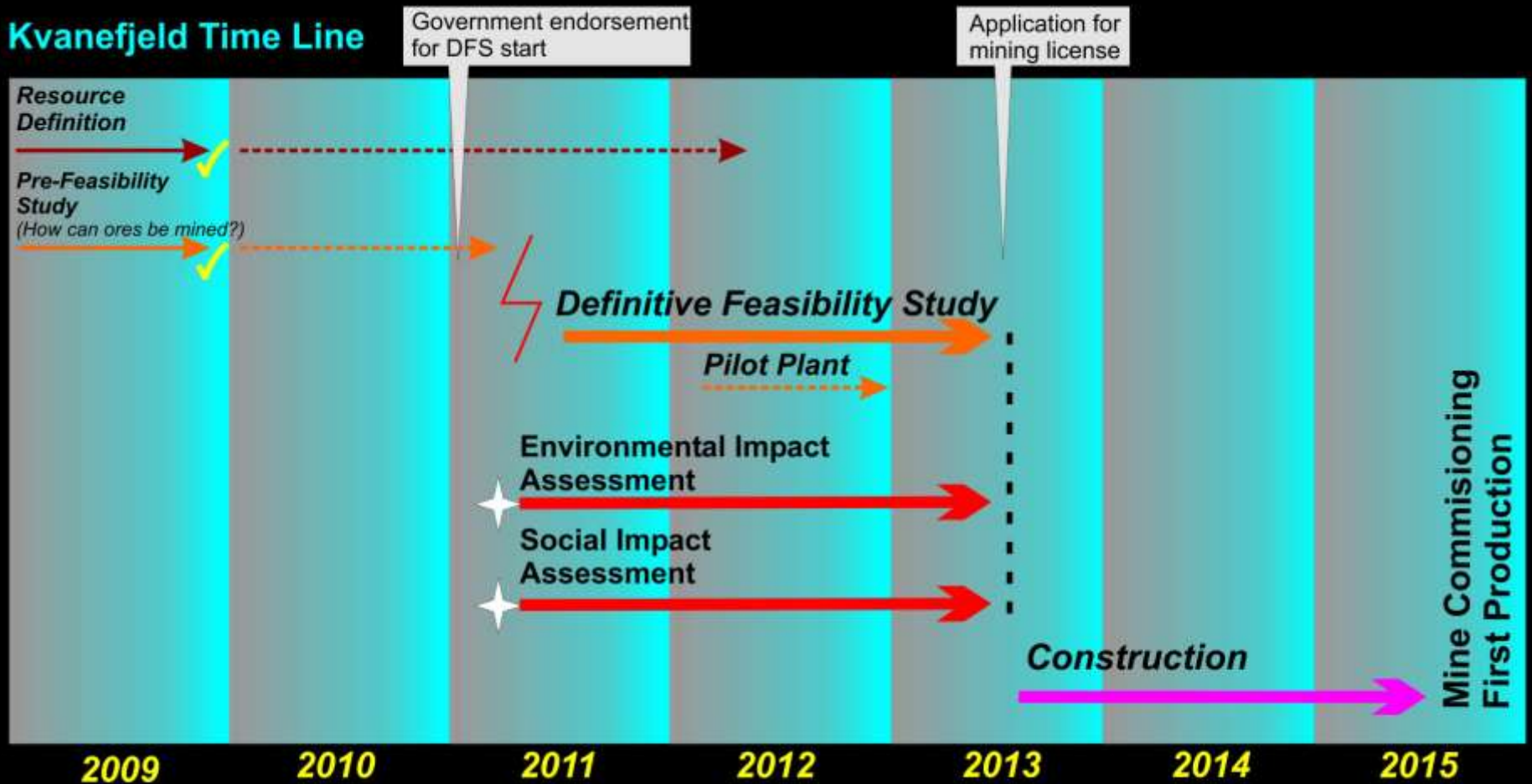
JORC-Code Compliant Resources

- 457 Mt global resource, 79% Indicated Category
- Metal inventory: **4.9 Mt TREO @ 1.1%**, 2.2 Blbs Zn, 282 Mlbs U_3O_8
- Orebody outcrops, low waste-ore ratio (<1)
- High grade lenses near surface (1.4% TREO)
- *Heavy rare earth content* 350 – 500 ppm, yttrium oxide ~ 1000 ppm



Feasibility Program

Kvanefjeld Time Line



GREENLAND
MINERALS AND ENERGY LTD



Feasibility/Project Assessment

- **Initial Assessment:** Output of ~40 K tones REO, ~ 3.7 K tones U_3O_8
 - **Unit Costs (including capital) - \$5.7/kg REO, \$37/lb U_3O_8**
- **Now focused on developing an efficient, long-life, sustainable operation**
 - **Lower throughput, increased recovery**
 - **Higher grade over life of 'mine financing'**
 - **Effective mineral beneficiation <25% of mass, >85% of all REEs, U**
 - **Evaluating hydro-electric power – likely coincide with ramp-up**
 - **Reduce capital and operating costs, equating to low unit costs**
- **Aim: cost-effectively produce light and heavy RE concentrates, zinc concentrate, uranium concentrate in Greenland, large-scale output, long life of mine (>50 years)**





GREENLAND
MINERALS AND ENERGY LTD

- *Location of offices*
- ✳ *Active work programs*



GREENLAND
MINERALS AND ENERGY LTD



Community Open Day, August 2010, Narsaq





Stakeholder and Community Support

- ✓ ***South Greenland Municipal Council***
- ✓ ***Mayor of south Greenland***
- ✓ ***Labour Union (SIK)***
- ✓ ***Employers Union***
- ✓ ***Mining and trade schools***





View over the broader geography of the Kvanefjeld multi-element project. The distance from Narsaq to Narsarsuaq airport is approximately 45km.



GREENLAND
MINERALS AND ENERGY LTD